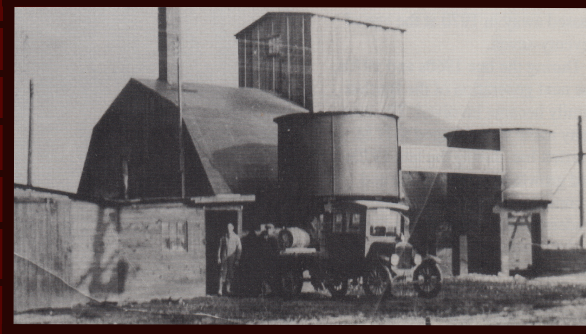


1912



BARTLETT SPRAY WORKS

In 1912, Norman M. Bartlett began manufacturing lime sulphur in a 40 inch cast iron kettle, establishing Bartlett Spray Works.

He gained notoriety quickly with his high quality product and it wasn't long before other products were added to his list of crop protection materials.

Norman's inventive mind next drew him to the task of designing and building fruit grading and sorting equipment as early as 1930, which set the world standard and was built for growers all over the globe.

Jim Bartlett, Norm's son, took over the leadership of the company in the 1950s, changed the name to N.M. Bartlett Inc. and during the 1970's, grew the business through service and commitment.

Still owned and operated by Bartlett family members, this successful business was critical to the development of agriculture and the Canadian horticultural industry, making a major contribution to the excellence in agriculture found today in the Town of Lincoln.

