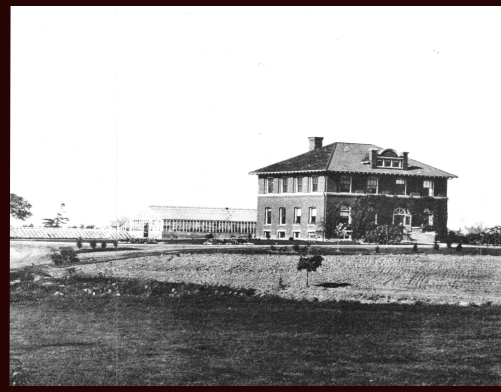


1906



HORTICULTURAL EXPERIMENTAL FARM

In 1906, Moses F. Rittenhouse purchased 90 acres at this site and donated it for use as a horticultural experimental farm operated by the Provincial Ministry of Agriculture. Research was undertaken related to fruit, vegetable, and ornamental propagation, and storage.

Many new varieties suitable for Niagara were developed here and made available to local growers, and the Ministry of Agriculture's Extension Branch, and later, the University of Guelph, provided new ideas and professional advice.

This site was critical to the development of the Town of Lincoln as a Centre of Excellence for Agriculture, by making available, directly to the farmers, some of the best ideas and technology in the world.

Today, the Vineland Research and Innovation Centre continues that legacy.

